



INDOFINE Chemical Company, Inc.

121 Stryker Lane, Bldg. 30, Suite 1 • Hillsborough, NJ 08844 • U.S.A.

Phone: (908) 359-6778 • FAX: (908) 359-1179

website: www.indofinechemical.com

e-mail: chemical@indofinechemical.com

CERTIFICATE OF ANALYSIS

Catalog Number: 22-314

Product Name: **4,2',5'-TRIHIDROXYCHALCONE**

CAS Number: [193746-17-7]

Lot Number: 000209

Chemical Formula: C₁₅H₁₂O₄

Molecular Weight: 256.26

Melting Point: 226-229°C

Appearance: Orange powder

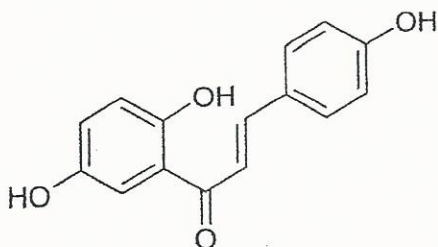
Solubility: Soluble in DMSO

TLC: Chloroform:Methanol (9:1)

NMR: Enclosed (Confirms to the structure)

Storage: Cool dry place

Purity (HPLC): 98.04%





INDOFINE Chemical Company, Inc.

121 Stryker Lane, Bldg. 30, Suite 1 • Hillsborough, NJ 08844 • U.S.A.

Phone: (908) 359-6778 • FAX: (908) 359-1179

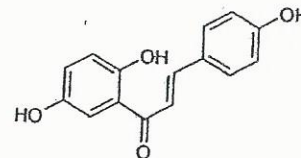
website: www.indofinechemical.com

e-mail: chemical@indofinechemical.com

HPLC ANALYSIS

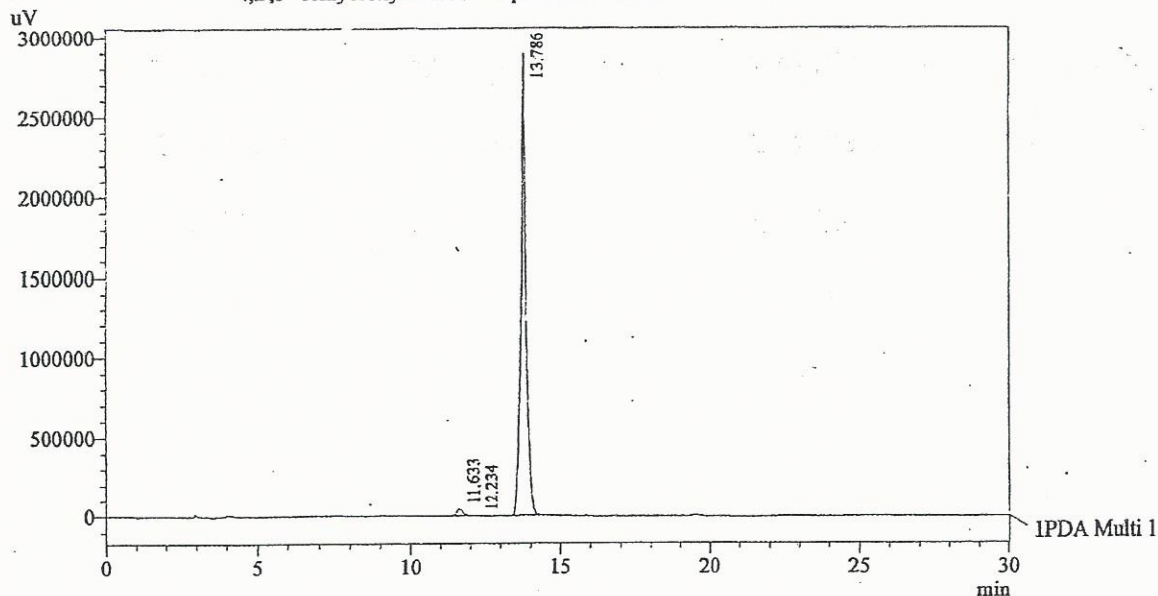
Acquired by : Sanjeev
Sample Name : 4,2',5'-Trihydroxychalcone
Sample ID : Lot No: 000209
Injection Volume : 20 uL
Data Filename : 170813A.lcd
Method Filename : Linear Gradient.M.lcm

Catalog No.: 22-314
Product Name: 4,2',5'-Trihydroxychalcone
Lot No.: 000209



Column : LUNA C-18(2), (250mm x4.6mm 5.0µ)
Flow : 1.000 mL/min.
Mobile Phase : A(0.05% TFA in water) B(Acetonitrile)
0.01 90 10
12.0 10 90
20.0 10 90
23.0 90 10
30.0 90 10
Diluent : Methanol

Chromatogram
4,2',5'-Trihydroxychalcone D:\promonence\Data



1 PDA Multi 1 / 240nm 4nm

PeakTable

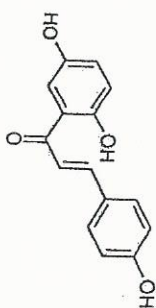
PDA Ch1 240nm 4nm

Peak#	Name	Ret. Time	Area	Area %	Relative Retention Time
1	RT:11.633	11.633	623748	1.88	0.84
2	RT:12.234	12.234	26617	0.08	0.89
3	4,2',5'-Trihydroxychalcone	13.786	32519755	98.04	1.00
Total			33170119	100.00	



INDOFINE Chemical Company, Inc.
 121 STRYKER LANE
 BLDG. 30, SUITE 1
 HILLSBOROUGH, NJ 08844

Catalog No.: 22-314
 Product Name: 4,2',5'-Trihydroxychalcone
 Lot No.: 000209



SOLVENT DMSO
 NS 16
 DS 0
 SWH 10330.578 Hz
 FIDRES 0.344376 Hz
 AQ 1.4519532 sec
 RG 28.5
 DW 48.400 usec
 DE 6.00 usec
 TE 298.2 K
 D1 1.5000000 sec
 ID0 1

1H IN DMSO
 AVANCE-600

===== CHANNEL f1 =====
 NUCl 1H
 P1 7.50 usec
 P1L 2.60 dB
 P1LW 6.62584448 W
 SFO1 600.3344836 MHz
 SI 32768
 SF 600.3300118 MHz
 WDW EM
 SSB 0
 LB 0.30 Hz
 GB 0
 PC 1.00

